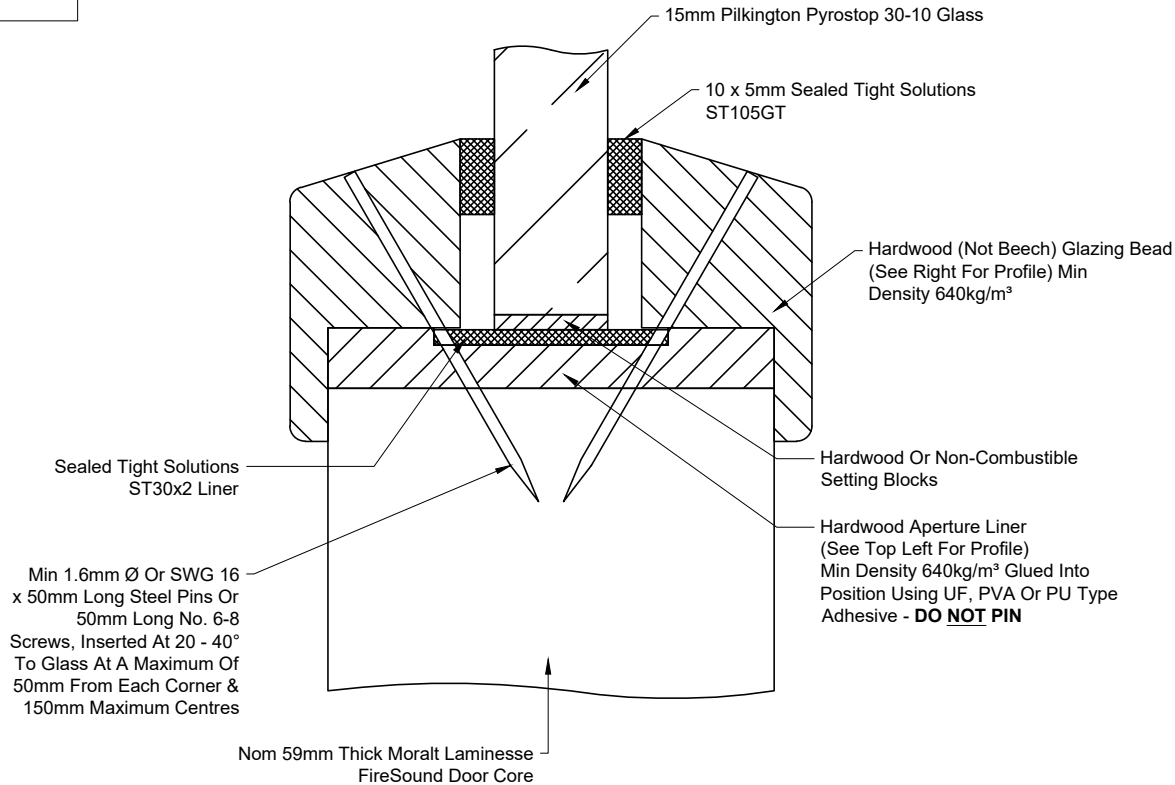
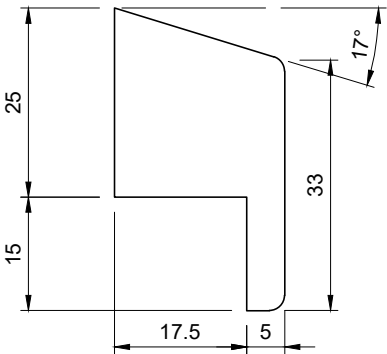


**Glazing Must Be To This Drawing - Do NOT Mix
Glazing Systems Even If They Appear The Same**

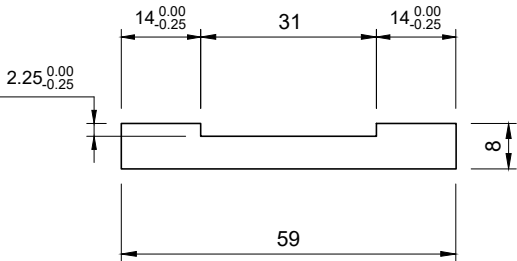
Quality Standard Of The Glazed Aperture
To Work Instruction - WI_021



Bead Profile - See DP23415



Hardwood Aperture Liner Profile



DO NOT PIN LINER IN PLACE - Glue in
Position Using UF, PVA or PU Adhesives

Quality Standard Of Glazed Aperture To Work Instruction - WI_21


Only Employees With A Signed Training Record For This Glazing System To Use This Glazing System

Approved Glass - See WF409922 Rev B							
Glass Type	Material Type For Glass	Beading Drawing	Material Specification For Beading	Maximum Glazed Area (m²)	Minimum Margin From Door Edge (mm)	Minimum Core Material Between Apertures (mm)	
15mm Pyrostop 30-10	MS_006	DP23415	MS_007	0.92	Top & Bottom Margins: 160mm Side Margins: 210mm	135	Aperture 21mm Larger Than Glass Size

Do Not Scale.

If In Doubt Ask!

Description: **Glazing System - 15mm PyroStop 30-10 - Moralt Firesound 59 - FD60**

Drawn By: P. Brash	Approved: Approved	Date: 14/02/2025	Drawing No: DP23414	 Unit 6, Ranskill Court, Sheffield, S9 5FZ
Size: See Above	Tolerance: +/- 0.5mm	Fire Rating: FD60	REV 00	
Cert No: WF409922 Rev B	© Doorpac Ltd			